

studio**Outside**





OUR VALUES

Relationships

We believe that what sets Studio Outside apart is our office culture of personal investment in relationships. Our passion for what we do makes it personal, within both the culture of our firm and the client relationships we cultivate. We care about what we do because of the enthusiastic people we work with.

Responsibility

We design for innovation, and yet with a sense of responsibility. An embedded sustainability where physical, economic, social, and environmental goals are tied together in an interconnected web. Through this design approach we are stewards to the client, our surroundings, and ourselves.

Artful spaces

We care about creating places through design with thoughtful intent—by thinking critically about the context we are working in, by envisioning the highest use of a place, and by realizing that a successful landscape is as poetic as it is practical. In doing so, we aim to inspire.

Unique sites

We seek to uncover the potential that comes in the diversity of sites. No two places are the same, and in expressing their unique qualities our work becomes meaningful. We aim to achieve a balance where we use our experience to guide the process while still remaining flexible towards discovery.

Collaboration

We work through collaboration and believe we are just one piece to the whole in finding a solution. Aligning ourselves with people from a multitude of professions, communities, and backgrounds excited about creating great places.

Shared experience

We are a collective set of personalities, working to design great places through many means and methods. Through it all, our work will endure beyond us, leaving the community with not just places to be, but with experiences to share.

Amazing grows from common ground.



Firm Information

Established in 2010, Studio Outside is a landscape architectural practice in Dallas, Texas, that thrives on the challenge of projects which demand a comprehensive intellectual, artistic and collaborative design process. Passionate about all facets of landscape architecture, our studio has completed projects of many types and locations around the world, ranging widely from high-profile public spaces to high-end residential properties.

Our passion for design drives us to pursue projects that require original thought and intense detailing, drawing upon years of experience with many cultures and a wide diversity of construction techniques. We aspire to design places that demand a thoughtful and refined aesthetic while also incorporating sensitivity and intrigue for the human experience.



THE TEAM

Shutters
ON THE BEACH



KENT MENDENHALL

Kent is a dynamic thinker with over 20 years of experience in Hospitality and Urban practice. As a design leader, his interests lie in assembling creative solutions that are a balance of experience and composition. Kent is committed to extending landscape architecture into the ether of other design disciplines in support of the greater good. He is a rare professional that is passionate about providing conscientious design for the experience of others. Kent is interested in the research and design potentials in landscape architecture and serves on the Landscape Architecture and Regional & Community Planning Advisory council at Kansas State University.



CAROLYN PERNA

Carolyn brings over 20 years of experience and commitment to designing quality and functional outdoor spaces. Carolyn's broad spectrum of experience combined with a pragmatic, responsive approach to design results in realizable project solutions. By developing designs with great attention to detail and working with the project throughout all phases, from early conceptual design to final construction documents, Carolyn sets the pace for successful implementation.

Carolyn has worked throughout the United States, Mexico, China and the Caribbean on a diverse range of projects for mixed-use, corporate, hospitality and civic clients.



BRIAN HALSELL

Brian brings a broad appreciation for natural systems, native plants, wildlife, and regional construction methods to each project. He consistently draws upon these personal interests to help clients realize their mission and program.

Brian is adept in his management of collaborative teams and participation in the multi-disciplinary process. He seeks a comprehensive integration and whole systems approach to natural processes. Brian also values the integrity of experience as important in educational and mission-driven sites designs such for public gardens, nature centers, and youth camp projects.



**WE CONNECT
GUESTS THROUGH:**

**NATURE,
& CULTURE,
COMPOSITION.**

The opportunity in landscapes for hospitality is immense. Whether it is a resort in an exotic natural setting or an urban hotel, our approach to hotels starts with the idea that we want to give the guest an opportunity for retreat from their everyday surroundings. An outdoor experience that allows one to **ESCAPE, RELAX & CONNECT** with their “alter ego” in a peaceful or invigorating environment.

For resorts, we might provide opportunities for relaxation and rejuvenation, or we might provide them opportunities for adventure and risk that they can’t experience in their normal environment. Attention to authenticity and connections to nature are paramount, weaving in the local culture both in the experience and in the creation of the experiences we provide the guests, and our clients, the brands and the hospitality investors.





HOUSES & RANCHES

Intimate Experiences

URBAN LIVING

High-Rise Housing

CAMPS & RECREATION

Programs & Activities

RETAIL & MIXED-USE

Dual Purpose

ENVIRONMENTAL PLANNING

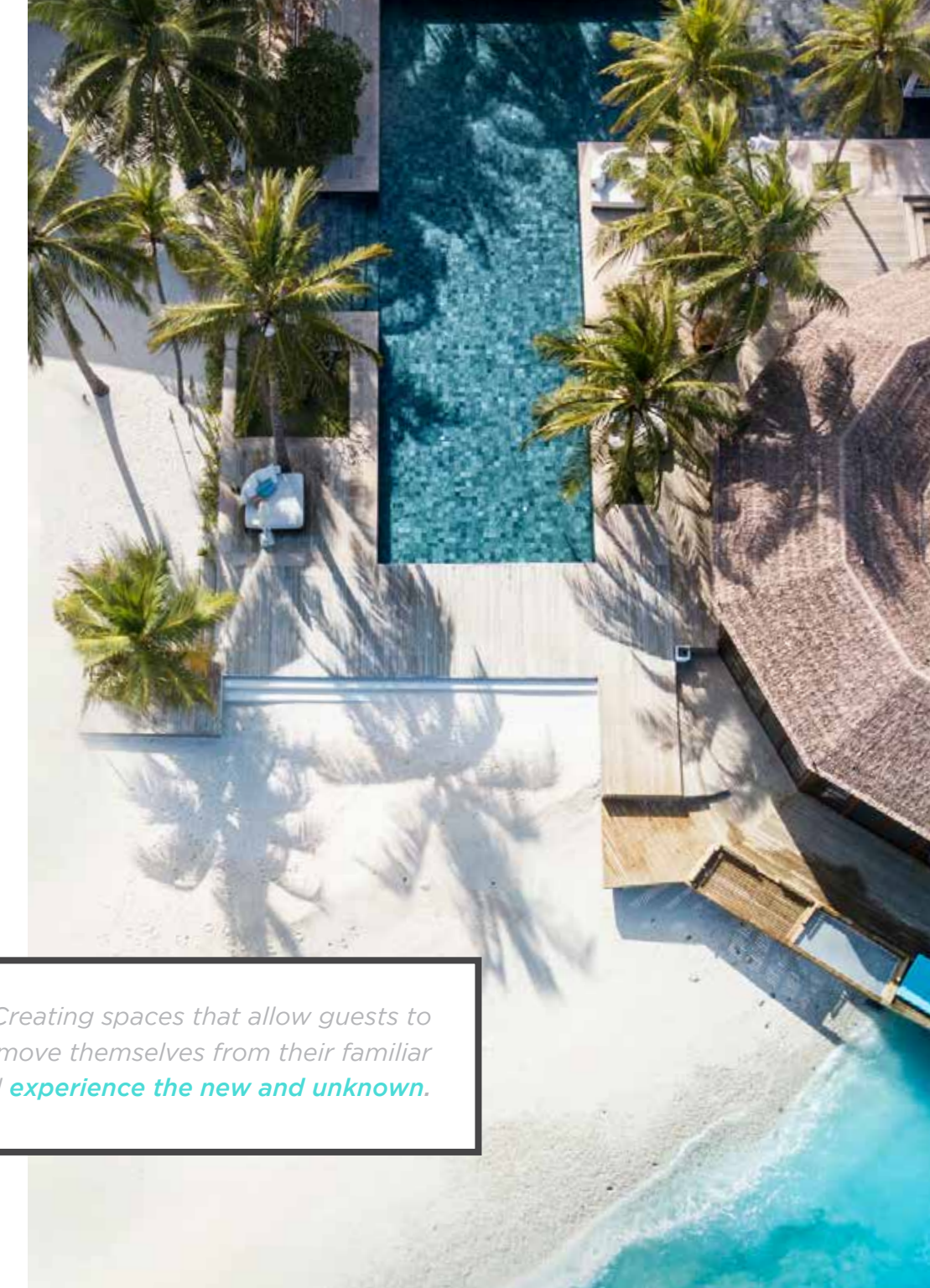
Respecting Natural Systems

GARDENS

Connecting Humans to Nature

HOSPITALITY

Our team has a history of working with complex projects all over the world while consistently working in the hospitality market for the last 20 years. We have the intellectual capital of over 10 principals with relative experience supported by successful studios of different experience levels in applied subject manner.



*Creating spaces that allow guests to remove themselves from their familiar and **experience the new and unknown.***

APPROACH

Because Studio Outside is diverse in project types, our consultation will bring experience in award-winning **Urban Residences** and **Weekend Retreats** for the discerning clientele who build their own escapes. Additionally, our projects include *Nature Centers*, *Botanical Gardens* and *Camps* across the United States with an emphasis on outdoor education which enrich our offerings to the Hospitality market.

We are experienced in **Eco-Tourism** and **Sustainable Practices** for landscapes including native flora and fauna, water collection systems and recycling storm water and wastewater in sustainable ways.



We love craft.

In landscape, architecture, and all the cultural fabric we engage on a project. Especially engaging the local community in the creation of craft for our projects.

Our 45 person team offers experience in LEED certification having accomplished numerous projects including several platinum level awards, COTE AIA Awards and some properties experimenting with off-the-grid systems completely.

We respect the sites upon which we practice, being good stewards of the land, protecting key environmental features and letting the site become a major asset for the property—**enhancing value in everything we do for the landscape.**

PRIVATE RESORT

NAYARIT, MEXICO

This one-of-a-kind site is located within the Mexican state of Nayarit. An authentic site with a luxurious native forest, broad Pacific vistas, sheer-faced rock formations, and white private sandy beaches. The resort architectural program consists of 30 full ownership villas, 120 tree house units, a spa, and an event center carefully resting atop the pristine jungle floor. In addition, a complete relaxing amenity package is designed to respectfully rest within the filtered light of the forest and the bright rays of the sandy beaches. Studio Outside was responsible for the site planning, visioning, amenity, and landscape architectural design.







THE POINT



MARKHAM HILL

FAYETTEVILLE, ARKANSAS

Studio Outside is currently working on the creation of Markham Hill, a boutique hotel located in Fayetteville, Arkansas. The property will serve the growing region of Northwest Arkansas, with both corporate and cultural institutions expanding in multiple cities. It will serve family events, the University of Arkansas, a new Community Social Club, and a section for serious mountain bikers and amateur athletes from the professional world.

The plan seeks to convert a 100-year-old farm and current Pratt Place Inn to a 10-acre campus with two independent hotel room venues, a historic barn, swimming area, and pasture set atop a significant wooded hill in Fayetteville. The clients aspire to create a destination hospitality property with a spa, fine dining, and general casual, creative vibe to Northwest Arkansas.

Studio Outside worked closely with Regenerative Environmental Design (RED) for consulting services. RED provided soil analysis related to stormwater management, the integration of green infrastructure into the overall design, and the exploration of stormwater management options that reduce the environmental impacts of the construction of conventional detention/retention of the pond.

Studio Outside implemented these concepts into a stormwater management plan in collaboration with the project civil engineer. A system of bioswales convey storm water from building roofs, parking lots, and other drainage areas to the ravine downstream. The bioswales cleanse the water and recharges the groundwater by high infiltration rates through engineered soils.







GRAND SOLMAR LANDS END

CABO SAN LUCAS, BCS MEXICO

Carefully nestled between the jagged mountains found near the tip of the Baja Peninsula, this resort represents the ultimate in luxury and guest resort experience. From the comfort of beautifully crafted pools, guests have a front row seat to witness the annual migrations of young humpback whales as they breach and frolic in the warm waters of the pacific ocean. The site amenities are interconnected by the 'Grand Paseo' which intuitively connects the guests between the lush amenities found interspersed within the shade of the fan palm trees. Based on the successful, consistent, and full occupancy rates have allowed ownership to expand to the newest destination in Cabo San Lucas... Rancho San Lucas! Experience of Kent Mendenhall and Carolyn Perna while a at TBG Partners.







PHASE III GRAND SOLMAR RANCHO SAN LUCAS

CABO SAN LUCAS, BCS MEXICO

The site of Grand Solmar Rancho San Lucas Resort is located on the client's family legacy ranch. Careful placement of the resort within the natural pristine, deep sandy beaches was critical to preserving the grassy shifting dunes that frame views of the vast Pacific Ocean.

The resort grounds are centered around a large saltwater lagoon, long sinuous pools, and naturalized landscape materials. Guests can step out into a living dune ecosystem that is an unparalleled experience like no other. Phase III began on the successful, consistent, and complete occupancy rates set forth in previous phases. These key factors have allowed ownership to expand to this newest destination. Phase I and II is the experience of Kent Mendenhall while a Principal at TBG Partners.







GRAND LUCAYAN RESORT

FREEPORT, GRAND BAHAMAS

The Grand Lucayan Resort is a 52-acre site located on the white sandy beaches in Freeport, Grand Bahama Island. The project's scope includes the renovation of two existing hotels and the construction of a new high-rise hotel that provides a total of 1,300 rooms. Each hotel is designed with a different theme, and the new pools, restaurants, and bars offer various experiences and activities for the guests. A spine connector connects all the pools with a Manor House inspired by island-style homes is centrally located to provide check-in and check-out services for guests to all the hotels. The landscape design features native plant materials with bright colors and textures to reflect the local charm of the island and the adjacent Port Lucaya Marketplace. Experience of Carolyn Perna while at TBG Partners.



HILL COUNTRY RESORT & SPA

J.W. MARRIOTT

SAN ANTONIO, TEXAS

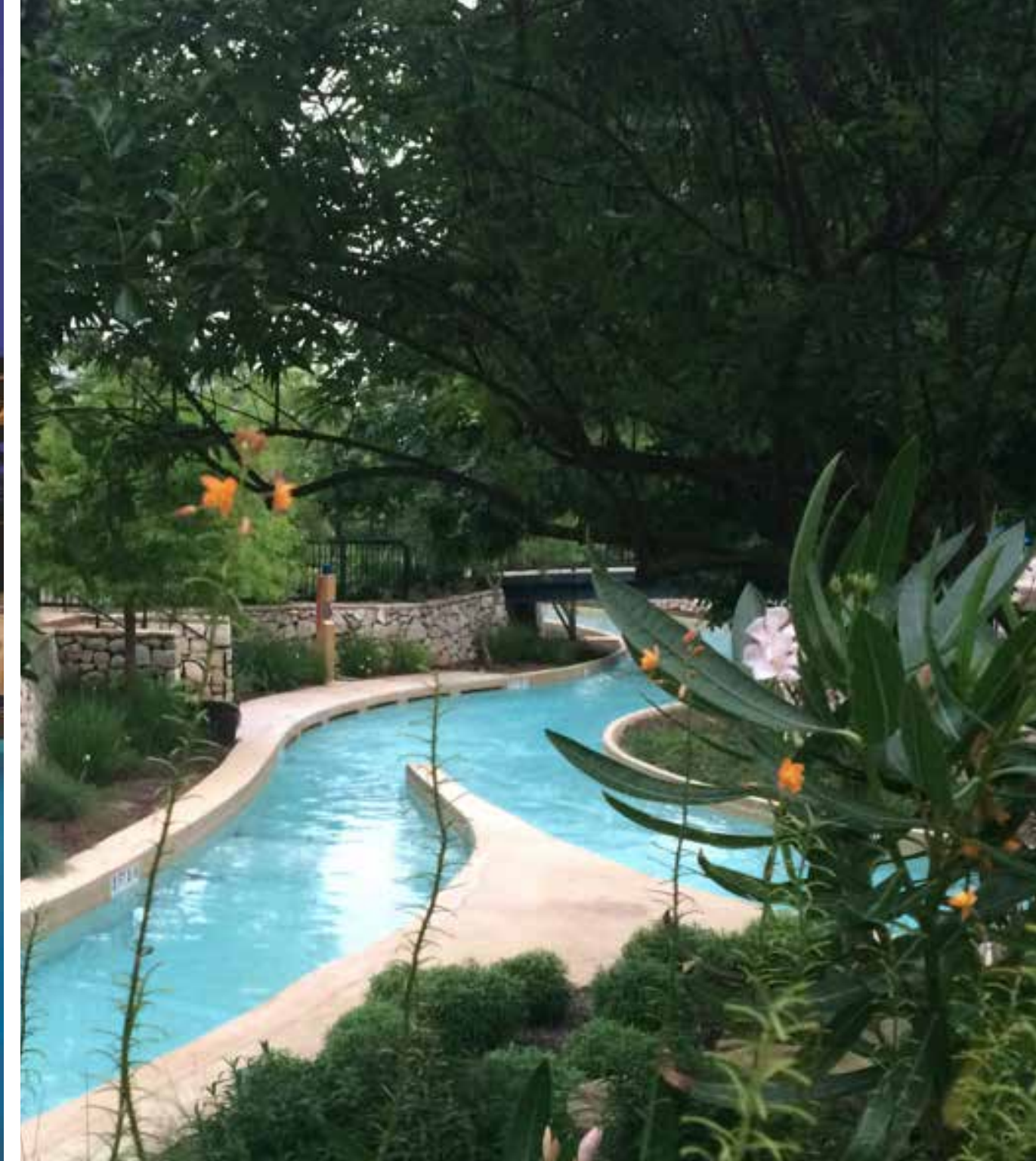
A world-class hotel surrounded by naturalized gardens sits high atop over 600 acres of preserved Cibolo Canyon woodland. Spaces defined by beautiful hill country architecture are carefully sited between the 1001-room convention center hotel, world-class spa, and championship TPC 36-hole golf course. These spaces are integrated into carefully preserved natural features and habitats which provide an integrated setting for the enhanced gardens surrounding the adventurous 6-acre River Bluff Water Experience. A creatively themed environment which is built upon the important history that water has provided to the San Antonio founding and subsequent growth. Layers of elegant pools, elevated water slides, and casual spaces provide an environment for all ages to find their own relationship to this unique area's healing waters. Experience of Kent Mendenhall while a Principal at TBG Partners.

AWARDS

2010 AAA 4 Diamond Award

2010 LEED Silver Certification
US Green Building Council





COPIA WINERY

PASO ROBLES, CALIFORNIA

Situated on the top of a natural ridge, Copia Winery overlooks acres of vineyards in the rolling hills of Paso Robles, California. The new facility includes a state-of-the-art hospitality and tasting room, barrel storage, and fermentation room. A simple but sophisticated design keeps the focus on the surrounding views of the vineyards.

A planted slope with native grasses and perennials greets visitors as they arrive. Corten material throughout the landscape connects the landscape to the large panels of the building façade. A linear fountain along the entry walk features a corten runnel with a black tiled upper and lower basin. The long, corten steel walkway leads guests to the event lawn, while specimen olive trees in gravel frame the space with natural wood benches for seating.





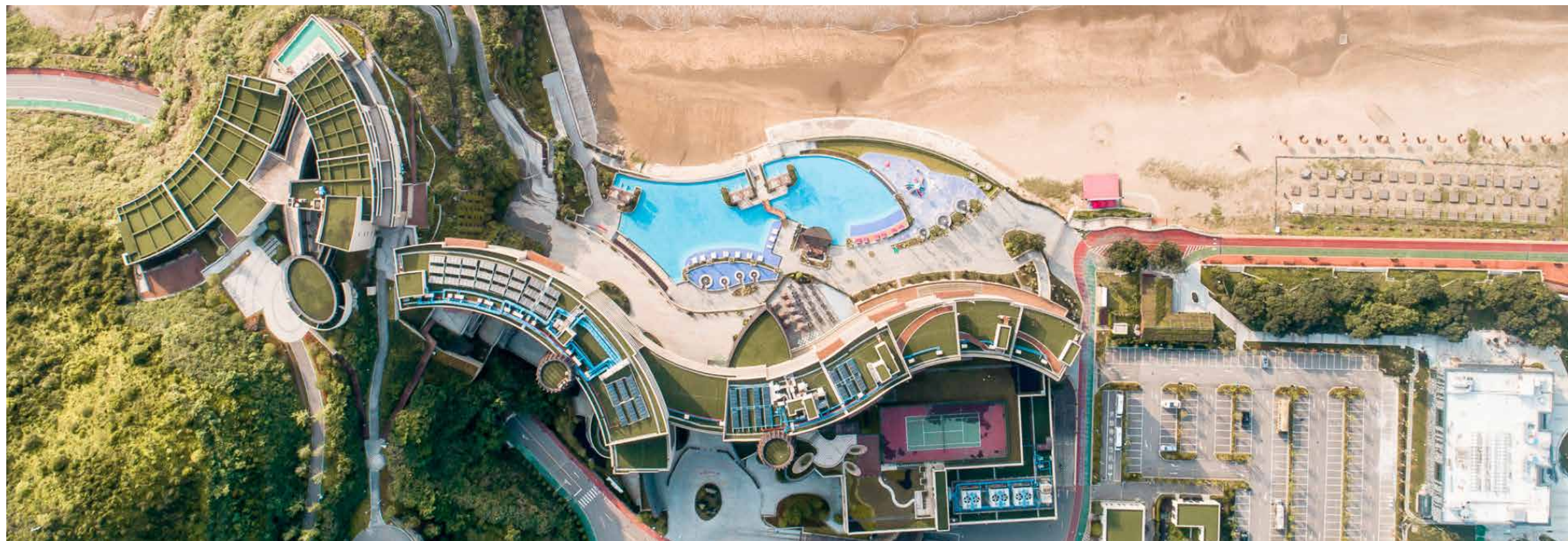
CROWNE PLAZA NINGBO

SHIPUZHEN, ZHEJIANG PROVINCE, CHINA

The Crowne Plaza Ningbo is a unique destination resort designed to attract tourism and conference business from Shanghai and drive future development of the surrounding Banbiashan Leisure Resort Area. The curving form of the architecture optimizes views of the ocean, and the steep rocky slopes provided opportunities for terraced landscapes and a variety of pool experiences. The landscape design celebrates the unique characteristics of the site and overcomes the challenges of extremely deep beaches.

The ultimate guest experience is on top of the rocky outcropping, where hill-top villas provide guests with 270-degree views from their private terraces and pools. The design team provided services through Design Development for this project and a local team completed the project through construction. Experience of Kent Mendenhall and Carolyn Perna while at TBG Partners.





JADE WATERS HILTON ANATOLE

DALLAS, TEXAS

A stylish pool and sophisticated architectural pavilions are nestled in the mature shade trees of the iconic Hilton Anatole gardens. This unique water experience is designed to include the entire family as they discover pools, slides, and the sinuous river experience all within an Asian-inspired landscape. Integrated within the pools and hotel gardens are carefully selected pieces of art from the infamous Crow family Asian art collection, further enhancing the guest experience like no other recreational water experience. Experience of Kent Mendenhall while a Principal at TBG Partners.









SMOKY MOUNTAIN RESORT

PIGEON FORGE, TENNESSEE

This nearly 200-acre resort nestled in the Great Smoky Mountains is designed to be a gateway to the national park as an immersive luxury experience in a natural setting. At the resort entry, visitors leave the valley and follow a curving road through the forest towards the resort at Mountain Top. On the way, they can visit Mid-Mountain, a retail experience anchored by a large outdoor music venue and beer garden style retail complete with a distillery. The Stirling Hotel at the Mountain Top commands premiere views and is next to a designed mountain stream with a series of waterfalls, nooks, and eddies waiting for exploration. Retail and signature restaurants wrap the stream with a boardwalk in an unbroken circle. Cabin tree houses and luxury townhome rentals in the forest provide more opportunities to relax in a private setting.



MASTER PLAN



ARRIVAL



MID-MOUNTAIN



MOUNTAIN TOP



GATEWAY

WEARS VALLEY ROAD

MASTER PLAN



MOUNTAIN TOP

DRIFTWOOD WINERY

DRIFTWOOD, TEXAS

Driftwood Vineyard is located on 64 acres deep in the heart of the Texas Hill Country. When guests arrive, they are led through a monumental gate that plays off the architectural style of the main production building. Meandering through vineyards and towering live oaks, the drive to the main campus builds in suspense as the guest climbs higher in topography until they reach the main campus, which is situated between two hills and overlooks the valley below, creating sweeping views of the property and exposing karst geology indicative of central Texas. Water in this region is a precious and often ephemeral phenomenon; using the concept of an arroyo to symbolize the movement of people and water, guests navigate through the landforms and ultimately arrive at the main entrance of the building. This property has been designed to allow flexible programming for celebrations of all scales through creating venue areas on the ceremonial lawn, in the wine cave courtyard, and throughout the property. As a functioning vineyard and winery, agricultural production is equally important as aesthetics and has been reinforced to highlight the processes of winemaking while tastefully hiding the service-driven utilities needed for shipments and event setup.





HILTON ANATOLE

DALLAS, TEXAS

The renovation of this Dallas landmark hotel includes new interior plantings in two atriums, the development of an Asian garden with a reflecting pool, tea house, natural stone outcropping, and sculpture in the larger atrium, and the re-planting of an exterior entry. The reflecting pool is polished black granite with a negative edge, raised 12" above the atrium floor. The natural stone outcroppings, cut granite roughly 12" square with a split-face top, are set into the garden among the new plantings and trees. Experience of Tary Arterburn while at mesa.





TIME TO REFLECT

The linear reflecting pool organizes the primary axis and defines a series of unique and relaxing gathering spaces.



SHUTTERS ON THE BEACH

SANTA MONICA, CALIFORNIA

Shutters is a five-star resort hotel directly on the boardwalk along the Pacific Ocean in Santa Monica. The character of the hotel is based on imagery of boathouses and yacht clubs typical to the turn of the century. The gardens reinforce the vernacular style of the hotel by providing intimate spaces between buildings and abstract the sense of a ship's deck on the pool terrace. Plant material reinforce the beachfront character using the rich colors of Bougainvillea vines, Birds of Paradise and palm trees. Restaurants, bars, and amenities open onto the boardwalk, allowing for spontaneous interaction between the pedestrian and hotel facilities. Experience of Bill Millsap while at mesa.





CASA DEL MAR HOTEL

SANTA MONICA, CALIFORNIA

During the Roaring Twenties and the height of the opulent “Gold Coast” era of Santa Monica beach clubs, Club Casa Del Mar dominated the social scene along the southern California coast. True to its storied past, Casa Del Mar has reopened its doors to revive its reputation as one of the most luxurious beach-front hotels. Not to imitate, but ‘recapture’ the essence of the 1920’s and ’30s style of the beach club during its halcyon days was the owner’s goal in renovation. A Mediterranean garden on the fourth floor, referred to as the Palm Terrace, embraces the hotel pool and serves as the perfect setting for catching the sun’s rays or an afternoon of ocean-gazing. Experience of Bill Millsap while at mesa.





OMNI PGA RESORT

FRISCO, TEXAS

Omni Hotels & Resorts is developing a signature golf resort in collaboration with an exceptional team of design professionals, including SB Architects, Girvin Associates, Studio Outside, among others. The resort features guest rooms, golf villas, three distinct pool experiences, a destination spa, and other outdoor activities, including tennis, pickleball, and bocce ball. In addition, the development includes an expansive retail and entertainment district with multiple dining opportunities, shopping, an outdoor stage for small-scale concerts, and a lighted 2-acre putting green.

The entire resort site is arranged in a campus-style format, maximizing views of the two 18-hole championship golf courses. The landscape is organized by a series of courtyards of varying scales to create opportunities for both large and small gatherings, both formal and informal. Topography and landscape frame and define vistas to the golf courses and vast native areas. The planting design leverages local and indigenous materials to reinforce the human connection to the site and surrounding region. Studio Outside's work capacity, expertise in large-scale projects, unique design solutions, and collaborative approach contribute to executing this high-profile destination golf resort to be completed in Spring 2023.









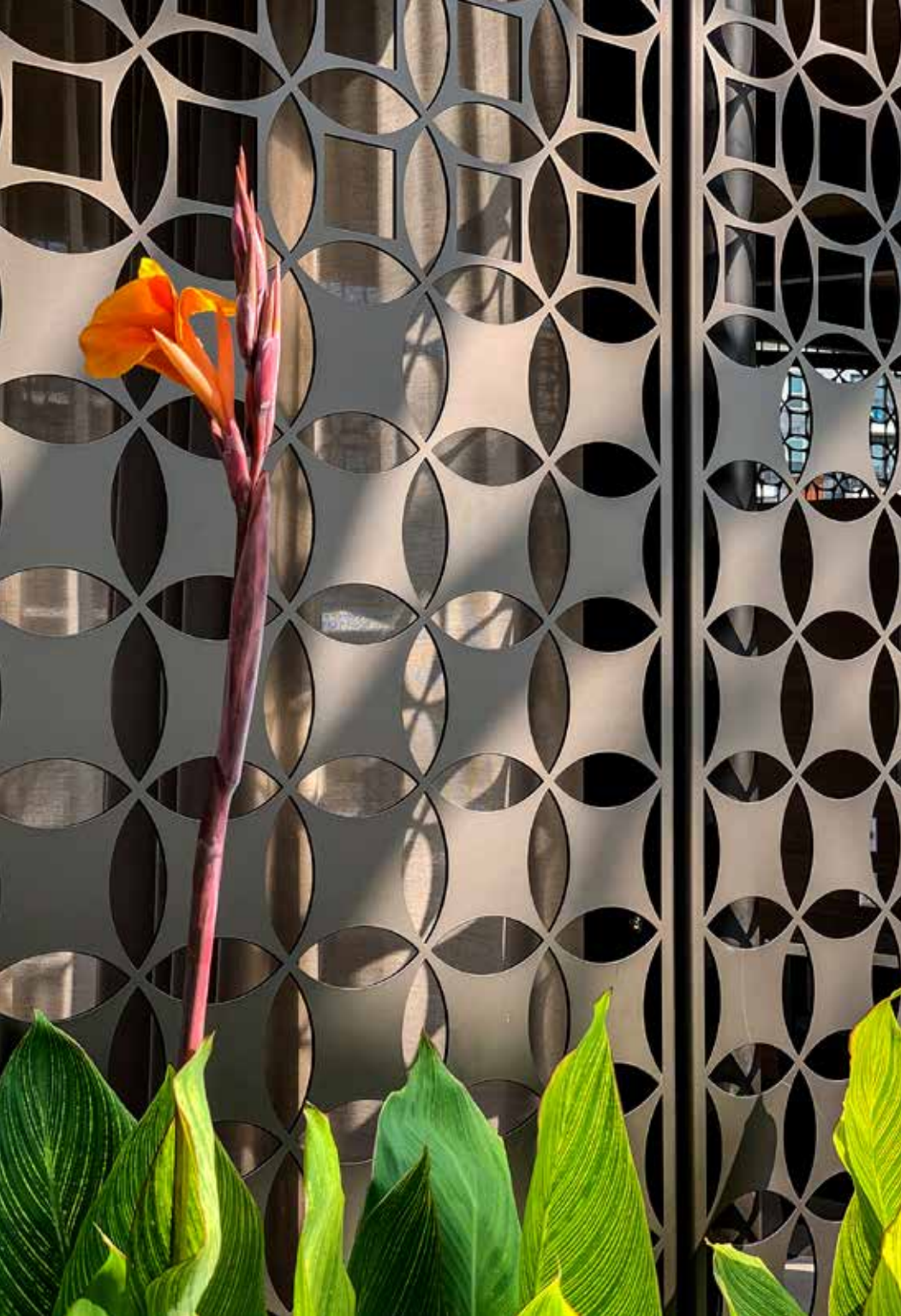
OMNI LAS COLINAS

LAS COLINAS, TEXAS

Omni Las Colinas is located along the banks of Lake Carolyn in central Las Colinas, a revived planned community within the city of Irving, Texas. Once catered to conference and business travelers, the hotel is newly revitalized as a popular resort destination for the broader local community. A pathway connection along Lake Carolyn's edge links to the hotel. This serves the local community to access the trail and come in to enjoy the outdoor bar and hotel amenities such as the restaurant and lobby.

By strategically locating the pool along the water's edge of Lake Carolyn and condensing the hospitality pavilion into a linear spine, it created efficient use of the pool, recreation, and leisure areas while activating all of the amenity areas. Also included in the renovation are numerous dining and entertainment patios, a leisure garden designed with programming for live entertainment and games, a 10,000 square foot function lawn intended for events, or a wedding reception overlooking Lake Carolyn.

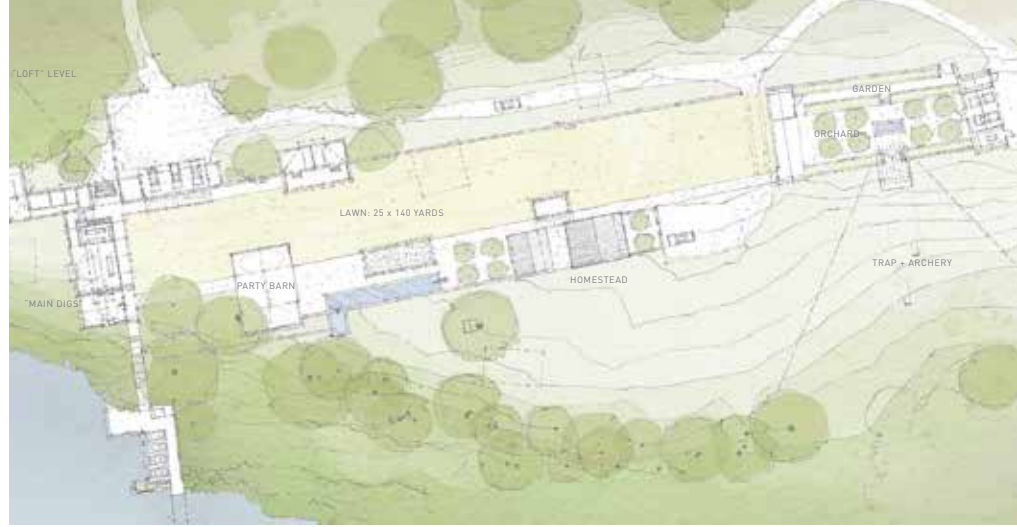


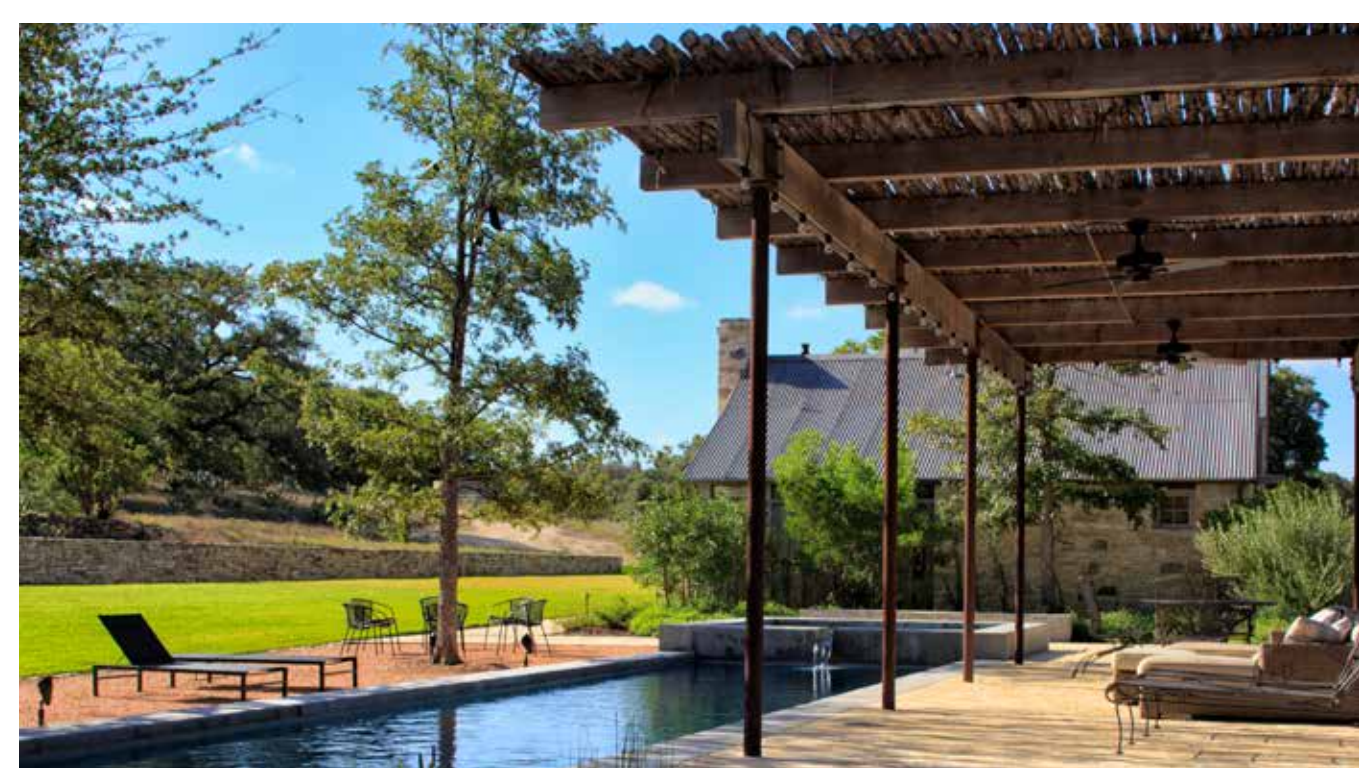


PAAHAA RANCH

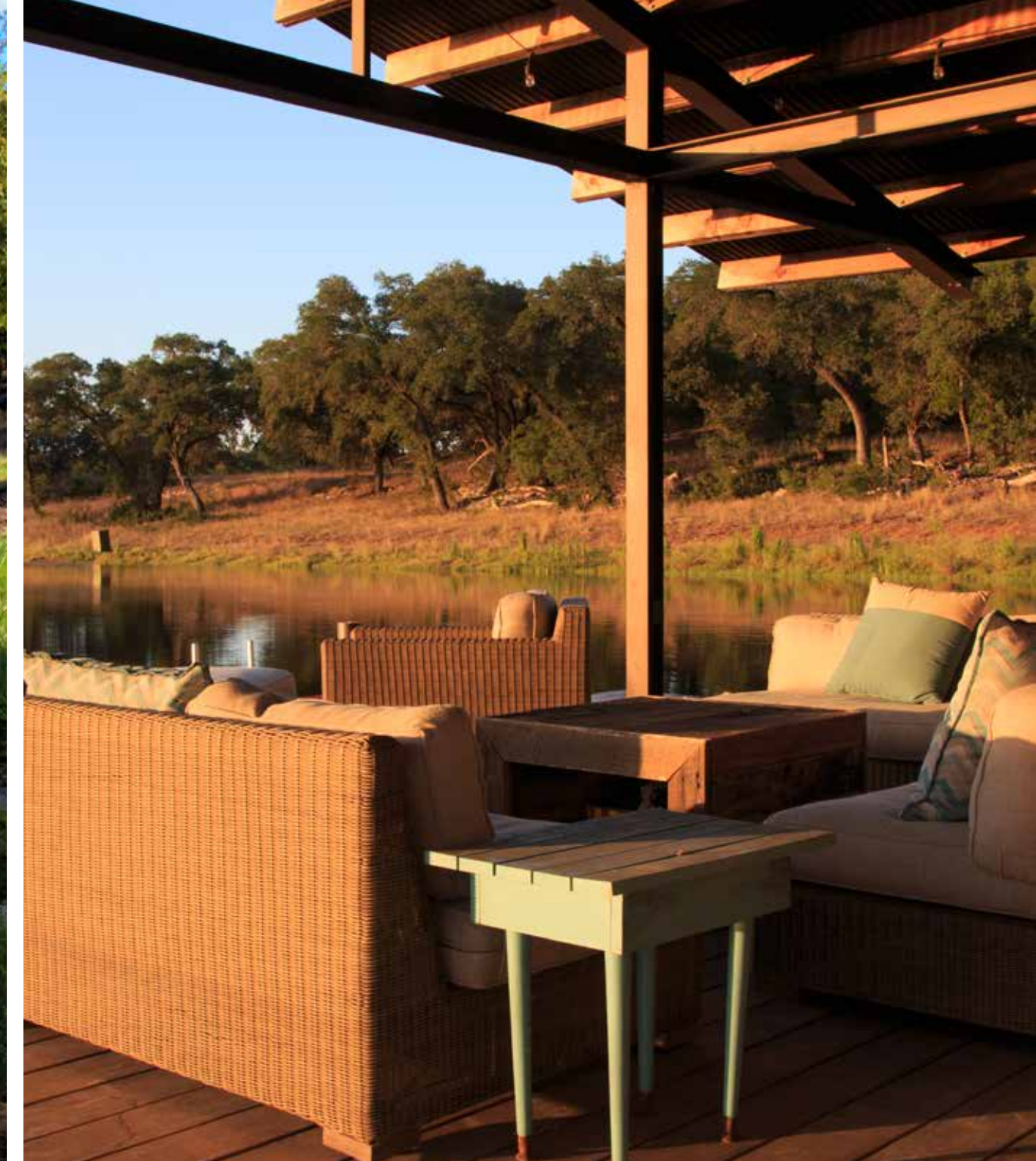
CANYON LAKE, TEXAS

Situated on the site of a 19th century German Hill Country homestead, PaaHaa Ranch reimagines elements of the historic working landscape. In collaboration with Lake Flato Architects, existing structures have been both refurbished and reconfigured using existing materials. A flat, linear lawn is used to define the site and contrast it with the surrounding hillsides. This constructed lawn connects a series of landscape moments between the existing and reconfigured structures. On the southern edge of the lawn a former livestock yard is transformed into a production garden and orchard. To the north, a lake provides space for recreation and habitat along the planted edges. On the western edge of the lawn, the buildings of the homestead are aligned. Between the structures, a series of intimate gardens and courtyards each speak to the ranch's historic past while providing a place for the family with young children to spend time together in this diverse Texas landscape.











HILL COUNTRY PROSPECT

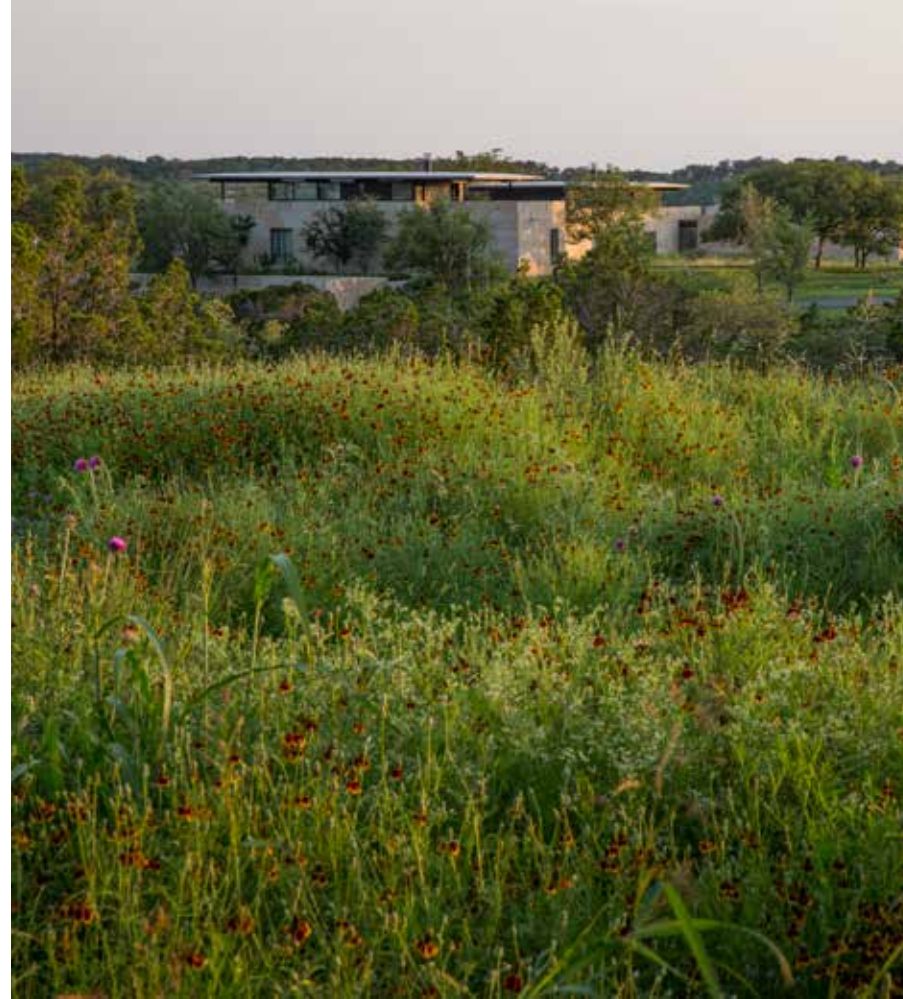
CENTER POINT, TEXAS

Situated atop an 8-acre mesa in the Hill Country of central Texas, this family compound includes a program of four structures and a half-mile driveway carefully sited by the landscape architect in collaboration with the architect and property owner. From the outset, the goals of the project were to respect the native landscape and topography, and use caution to preserve every tree and as much native habitat as possible.

AWARDS

2014 Honor Award
National ASLA

2014 Honor Award
Texas Chapter ASLA





TOPOGRAPHY

The outdoor family gathering space is centered around a fireplace and immersed in native vegetation highlighted by flowering native perennials that provide color through most of the growing season, providing an incredible vista of the surrounding 200 acres and Hill Country sunsets. Nearby, the master bedroom's private terrace shares this view.





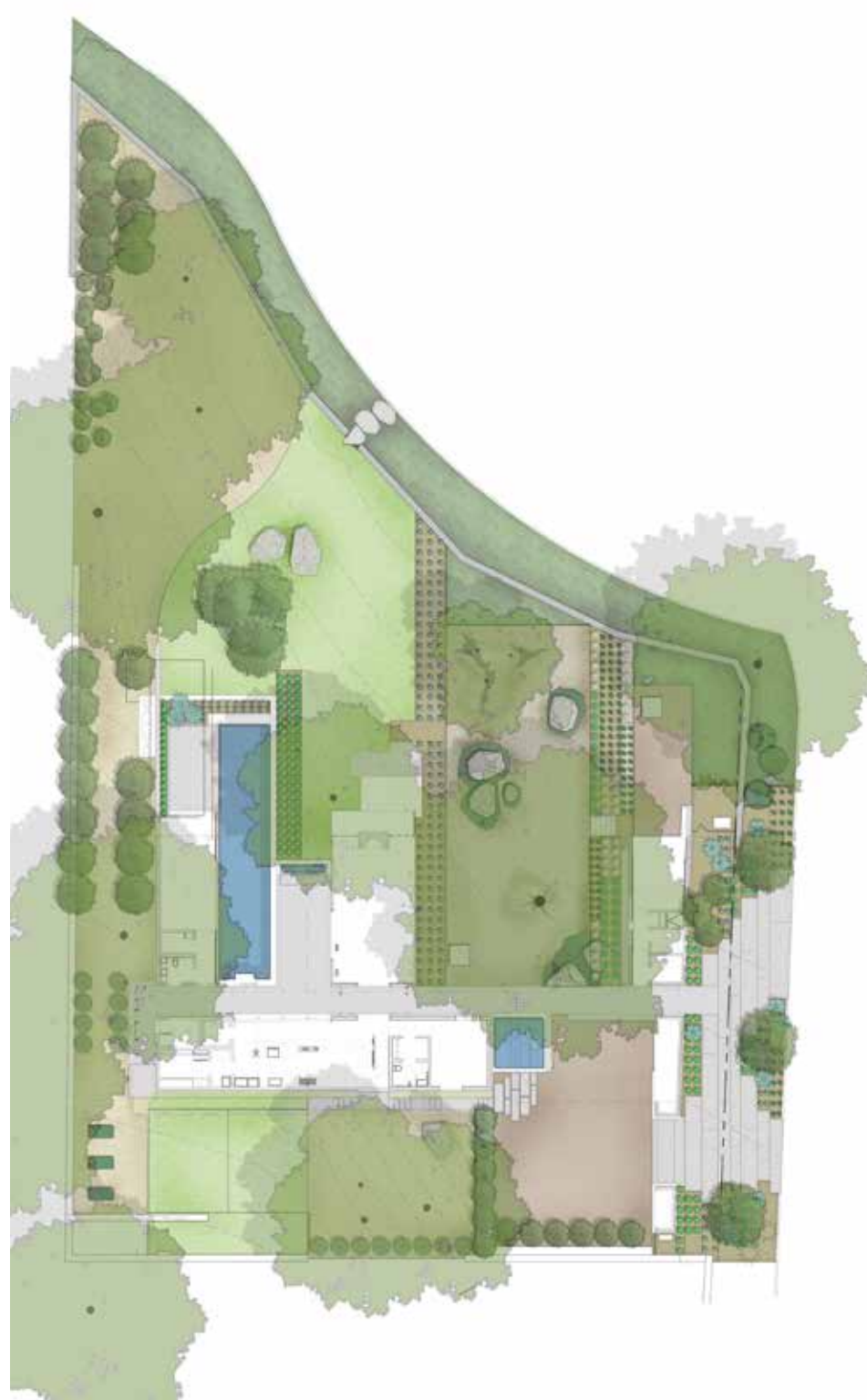


OLMOS PARK RESIDENCE

SAN ANTONIO, TEXAS

Located in the historic Olmos Park neighborhood, the residence sits along a winding road that leads to a densely wooded site. The two-story house is sited around mature live oaks with limestone walls serving as the garden backdrop. A grand oak tree at the main courtyard provides a magnificent, sculptural form while granting shade and dappled light.

Materials were carefully selected to preserve the integrity and character of the neighborhood and region. From the motor courtyard, visitors are led by a stone path over a koi pond to the main courtyard and front entrance. The planting approach creates a clean, minimal landscape to contrast the adjacent heavily forested creek bed. Linear beds of yuccas and agaves with level gravel areas serve as a simple ground plane for the twisted branching of the Oaks. Once inside the home, the main living area reveals floor-to-ceiling views of the outdoors as if hovering into the landscape.



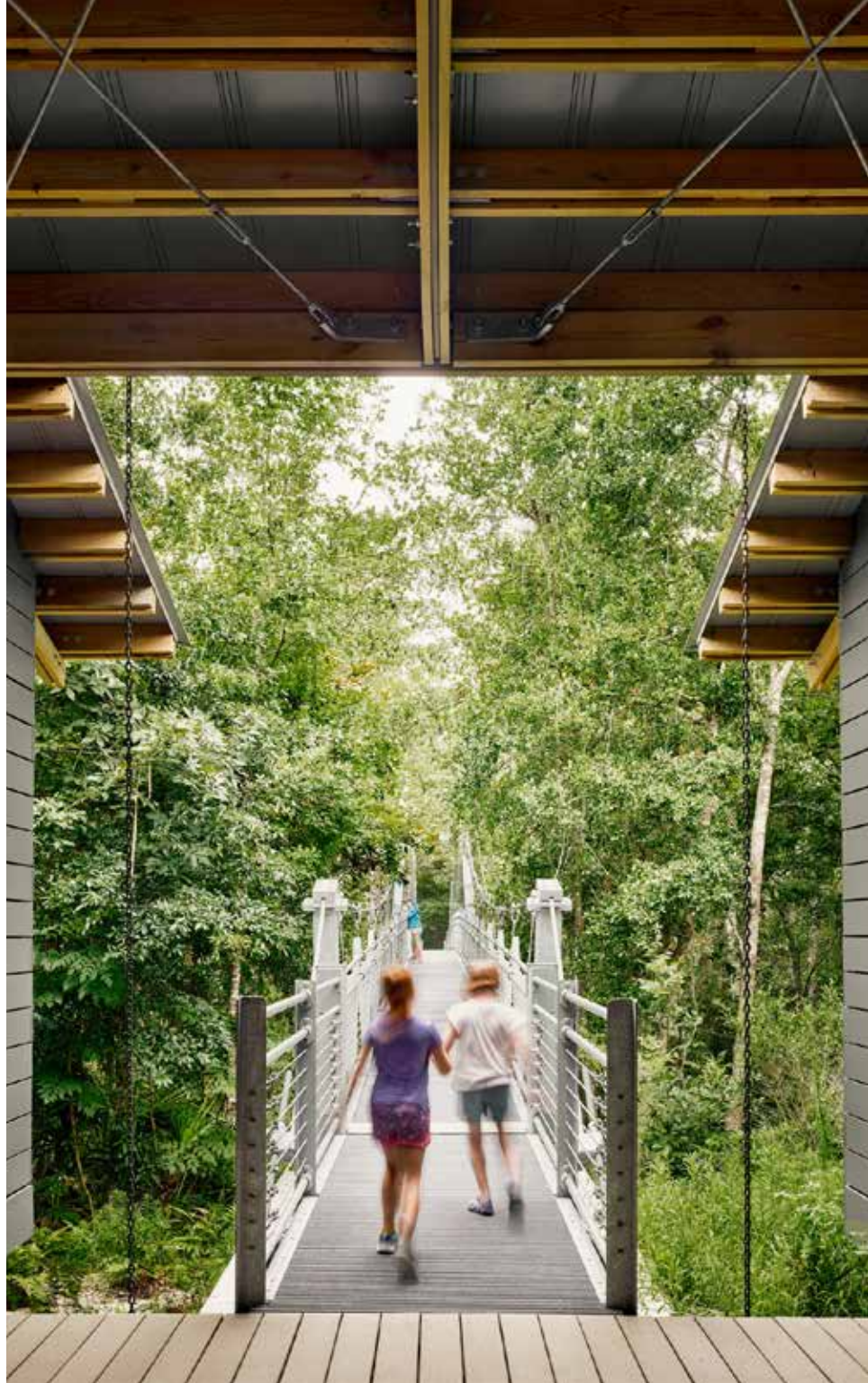


GULF COAST RESEARCH LABORATORY

OCEAN SPRINGS, MISSISSIPPI

In 2005, the J.L. Scott Marine Education Center and Aquarium was a thriving aquatic educational center for the Ocean Springs, MS community. Disaster struck in August of that year, as Hurricane Katrina destroyed the entire complex, forcing the Center to move to a temporary facility at the laboratory's Halstead location a few miles away.

Studio Outside, Lake Flato Architects, and other specialists were brought together to create a unique campus experience within a pristine forested bayou environment. The design team has created a carefully sited complex of small buildings—including administrative offices, conference rooms, multi-purpose classrooms, laboratories, exhibit space, and kitchen facilities—nestled on the highest elevation of a preserved woodland. Parking for 30 visitors and overflow parking for large events is accommodated within the fabric of the natural environment. Upon arrival, guests are exposed to sweeping views through the trees of the surrounding bayou. Existing wetland, bayhead drains, outdoor classrooms, pedestrian access to existing boat docks, and nature trails through undeveloped portions of the preserve are all part of the visitor experience.



AWARDS

2022 Architecture Season One Winner
America By Design

2020 COTE Top Ten Award
AIA Mississippi

2019 Honor Award
Texas Chapter ASLA
Built Project

2018 Honor Award
AIA San Antonio

2018 Best of Design Special Mention
Architect's Newspaper
Research Category

2018 Honor Award
AIA Mississippi

2018 Sambo Mockbee Award
AIA Mississippi

2018 Sustainability Award
USGBC Mississippi





SHANGRI LA BOTANICAL GARDENS & NATURE CENTER MASTER PLAN

ORANGE, TEXAS

Shangri La is a botanical garden and nature education facility located on the coast of Texas in the United States. It is a 252 acre site filled with geographic and regional natural beauty with numerous native flora and fauna. The project was developed under the leadership of three design team: Tary Arterburn, Jeffrey Carbo Landscape Architects and Lake Flato Architects.

The project includes a visitor center, indoor classrooms, outdoor classrooms, boat facilities, botanical garden, children's garden, research facilities and demonstration gardens for water purification treatment. The landscape is either non-irrigated indigenous species or is irrigated from collected rainwater completely. The project utilizes geothermal heating and cooling, solar energy collection, and vegetated wetland water treatment. Parts of the project require no utilities other than the ones they produce on site. Experience of Tary Arterburn while at mesa.

AWARDS

2012 Honor Award
National ASLA
General Design

2010 Gold Award
Texas Excellence in Landscaping

2009 Honor Award
AIA Top Ten Green Projects

2008 LEED Platinum Certification
US Green Building Council

2008 Honor Award
The Waterfront Center
Excellence in Waterfront

2008 Honor Award
Louisiana ASLA
General Design

2004 Honor Award
Texas Chapter ASLA
Planning and Analysis







VISITOR CENTER



BOTANICAL GARDEN





CHILDREN'S GARDEN



Atlanta Botanical Garden
Atlanta, Georgia

Eagle Family Plaza
Dallas, Texas

One Arts Plaza
Dallas, Texas

Red Butte Water Conservation Garden
Salt Lake City, Utah

North Park
Dallas, Texas

Gulf Coast Research Laboratory
Ocean Springs, Mississippi

Austin Ranch
Carrollton, Texas

Overhill Residence
Dallas, Texas

2929 Wesleyan
Houston, Texas

Sea Star Base Galveston
Galveston, Texas

Desert Portal & Terrace Garden
Phoenix, Arizona

Valley Vista Park
Lewisville, Texas

Broadway Plaza
Walnut Creek, California

Hotel San Pancho
Nayarit, Mexico

Tarrant County College East Campus
Fort Worth, Texas

Olmos Park
San Antonio, Texas

AT&T Discovery District
Dallas, Texas

New Parkland Hospital
Dallas, Texas

The Sound
Coppell, Texas

Shangri La
Orange, Texas

Bernheim Arboretum & Research Forest
Clermont, Kentucky

Shangri La
Orange, Texas

Peachtree Center
Atlanta, Georgia

Richardson Core Plaza & Linear Park
Richardson, Texas

SELECTED PROJECTS



